



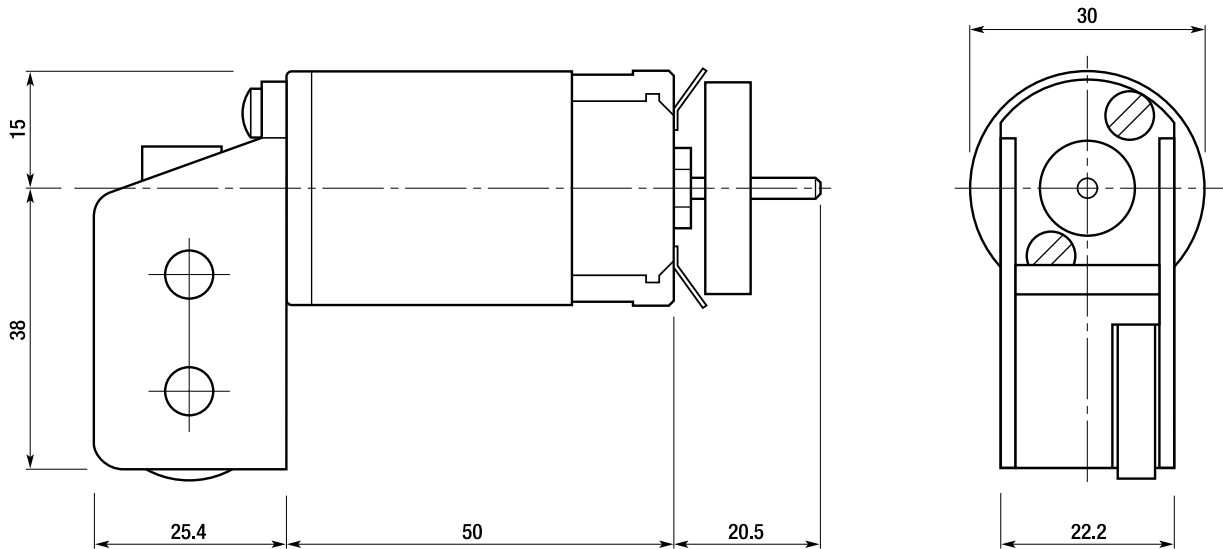
Crailcrest Gearbox fitted with Buhler 1.13.021.101 Motor

Available Ratios: 14/1, 24/1, 33.3/1

Supplier: MSC Models Ltd

Motor Nominal Voltage 12V Stalled Current at 12V - 3.2A

For full motor details see Motor Data Sheets



Note: The voltage is at the motor terminals. It is recommended that the supply voltage be at least 2V higher to allow for feeder and pick-up drop.

Ratio	Performance	12V	16V	22V
14/1	No Load Axle Speed (rpm)	436	581	798
	Stalled Torque (g.cm)	3812	5081	6987
	Speed Rating	327	436	598
	Torque Rating	953	1270	1747
24/1	No Load Axle Speed (rpm)	254	339	466
	Stalled Torque (g.cm)	4831	6438	8854
	Speed Rating	191	254	350
	Torque Rating	1208	1610	2236
33.3/1	No Load Axle Speed (rpm)	183	244	336
	Stalled Torque (g.cm)	6702	8904	12243
	Speed Rating	138	183	252
	Torque Rating	1676	2234	3061